

Asheboro Community Bible Study

The 2023-2024 Study began at Asheboro Friends Meeting on September 11, 2023. You can choose between Monday nights at 7:00 PM or Tuesday mornings at 10:45 AM.

In my distress I called upon the LORD; to my God I cried for help. From his temple he heard my voice, and my cry to him reached his ears.

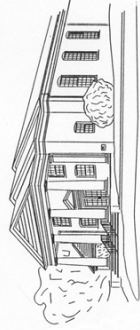
— *Psalms 18:6 (ESV)*

The study will cover the following books: Ruth, 1 & 2 Samuel, & Ephesians. Registration is now open and the cost is \$35.00 for each adult.

For more information contact Jay Brownfield at 336-653-9002 or visit the website at <https://asheboroeve.cbssclass.org/>.

Asheboro Friends Meeting

PO Box 987
Asheboro, NC 27204-0987



Asheboro Friends Meeting

East Kivett and Main Streets
Asheboro, North Carolina

Mailing Address
PO Box 987, Asheboro, NC 27204-0987



"I Have Called You Friends"

John 15:15

David Millikan, Pastor
Cynthia Pierce, Youth Director
Church Phone: 336-625-3803
Pastor's Study: 336-629-2858
Pastor Cell Phone: 336-689-4275
Youth Director: (H) 336-629-6430 (C) 336-953-2675
Email: asheborofriends@yahoo.com
Website: www.asheborofriends.org



Asheboro Friends Meeting

A Meditation from Christina H. Jones

THE HEART OF THE HOME

But his mother kept all these sayings in her heart.

— Luke 2:51 (Read Luke 2:43-52)

These words of Luke have seldom been surpassed in tenderness and understanding as a picture of universal motherhood. We cannot say to what extent the finest flowering of the Hebrew religion came from the hope that lay in the heart of every Hebrew woman that she might be the mother of the Messiah. Motherhood was a sacred responsibility.

It is in the treasuring up in their hearts of all the little things about us that makes mothers so precious. In a world where we have failures and disappointments, what a comfort to know that someone loves us, believes in us, and dares to hope for us in this particular way. Around this, homes are built.

Today the Christian home is one of the most beautiful experiments in living we know, and in it lies the hope of the future. “Behold, thy father and I have sought thee sorrowing”, or anxiously. Small wonder that Jesus likened divine love to the love of a parent.

You are the bows from which your children as living arrows
are sent forth.

The Archer sees the mark upon the path of the infinite, and
He bends you with His might that His arrows may
go swift and far.

Let your bending in the Archer’s hand be for gladness;
For even as He loves the arrow that flies, so He loves also the
bow that is stable.

— Kahlil Gibran

*Our Heavenly Father, we pray for a greater appreciation of the wonder of the home
and its relationships. May our home radiate love and adventure for Thee.*

Amen

Reprinted from Quaker Meditations, edited by Cecil E. Haworth, printed in 1944, reprinted in 1989.

Christina H. Jones served the Society of Friends well in various capacities, including several years as missionary in Palestine.

Cover painting: *Fall Scene* by Bernie Slice, 2023

Birthdays & Anniversaries

B Mary Kinney Thomas — November 19
A Calvin & Nell McCombs— November 19
B Danica Pierce — November 20
B Lee Davidson — November 25
B Corey Vaughn — November 26
B Jeff Underwood — November 27
B Piper Davidson — November 29

CUOC for November:

Black Eyed Peas

Feeding Locals First Christmas wish list:

Christmas cards, candy, pens, markers, colored pencils, puzzle books, drawing tablets, small notebooks, playing cards, gloves, socks, toboggans, hand warmers.

Please purchase this month or you can give a monetary donation to USFW and they will buy the items needed.

October Financial Report:

Income:	\$ 10,304.68
Expenses:	\$ 9,667.68
Gen Fund Balance:	\$ 39,211.94

Giving to Asheboro Friends Meeting is now available online through our website at www.asheborofriends.org. Anyone can support the ministries of Asheboro Friends Meeting by simply clicking on the “Give to AFM” icon. Online giving is supported by our partnership with Tithe.ly. Click and you will be directed to the Tithe.ly site where you can follow the simple instructions. You can also go to our website from your smart phone by scanning the QR code located on the front cover of this newsletter.

USFW Bereavement Fund A donation towards food was made to the Lois Richardson family from the USFW Bereavement Fund. Those wishing to keep the fund active should make checks to USFW or put cash in an envelope marked USFW and place in the Sunday offering.

Excerpt: “The Covenant of Peace”

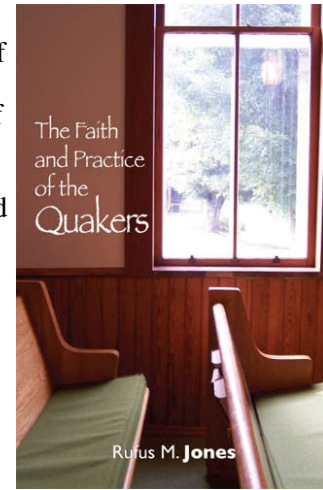
“I told them,’ he says, ‘that I lived in the virtue of that life and power that takes away the occasion of all wars...I was come into the covenant of peace which was before wars and strifes were.’ It was a remarkable position for a young [George Fox] to take and it was oddly enough expressed. The covenant of peace into which he had come was almost certainly in his mind the life of the Spirit.

He felt that he was raised to the nature and type of the new Adam and was forever done with the ways of the Adam who fell, and it seemed to him that the new and higher life entailed a spirit and method of life which were essentially Christlike. It is a way of life that practices love and forbearance. It seeks to give rather than to get. It conquers by grace and gentleness. It prefers to suffer injustice than in the slightest degree to do it. It wins and triumphs by sacrifice and self-giving. It spreads abroad an atmosphere of trust and confidence and proposes to prepare the way for a new world by creation of a new spirit which is essentially the spirit of the Cross. If every one lived thus, there would be no occasion of war but a covenant of peace.”

Excerpt from *The Faith and Practice of the Quakers*, Rufus M. Jones, pp. 111–112 — available to purchase on the FUM Bookstore.

Friends come back from their worship with a new sense of ordination, but not the ordination of human hands. Something has happened in the stillness that makes the heart more tender, more sensitive, more shocked by evil, more dedicated to ideals of life, and more eager to push back the skirts of darkness and to widen the area of light and love.

~ Rufus M. Jones, 1863-1948



Thanksgiving Meal

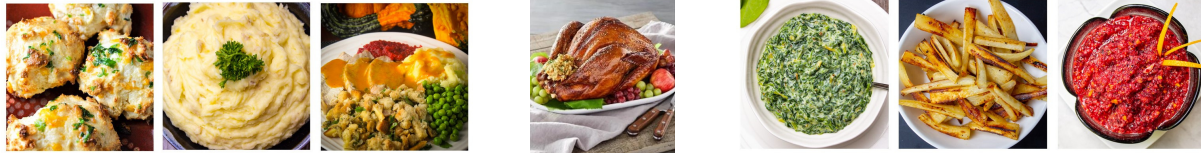


Sunday, November 19, 2023

12:00 Noon

Following morning worship in the Fellowship Hall

Bring your favorite dishes to share with Friends!



Bring your favorite friends to share the meal!



The Season of Advent

The promise for Israel and the promise for the church
is Jesus Christ;
He has come, and He will come again.
This is the essence of Advent.



First Sunday	Hope	December 3
Second Sunday	Love	December 10
Third Sunday	Joy	December 17
Fourth Sunday	Peace	December 24
Candlelight Service	Christ	December 24

Would you and your family like to participate in the Lighting of the Advent candles during these services? If so please contact David Millikan or Cynthia Pierce..

Asheboro Friends Prayer List November 15, 2023



Members

Becky Boone
Carol Bullins
Jackie & Pat Cole
Becky Craven
Amy Fogleman
Ava Grace Fogleman
Sheila Huffman
Linda Lanier
Helen Marley
Fred Ownsby
Mary Ella Pugh
Family of Lois Richardson
Family of Doyle Vaughn
Danny West
Jan Winslow

Hospitals & Nursing Homes

Brookdale:
Bryan Bowman
Pat Rutherford
Brookdale, Rock Hill, SC:
Harry Hudson
Sandy Ridge Memory Care:
Linda Moody
Terra Bella:
Hal Powell

Law Enforcement & Services

Jeremy Callicutt
Evan Underwood
Stephen Vaughn
Asheboro Police Department
Asheboro Fire Department
Randolph County Sheriff's Office

Missions

Chosen People Ministries - The Arnolds
Gideon Ministries
HASTEN International
Nikki Holland—Belize
Lydia's Place
Neighbors Helping Neighbors & CUOC
The Friends Center MOWA
Jonathan Spainhour

Ministers & Staff

David Millikan
David Peters
Cynthia Pierce
Mike Wall
Rusty Parsons

Friends

Julia Barnes
Alice Beasley
Logan Brooks (surgery)
Suzanne Brown
Barbara Bullin
Larry Byrd
Ethan Clarke (cancer)
Eddie Coggins (dialysis/kidney transplant)
Betty Cox
Gwen Davis
Family of Wayne Dunn
Theron Farlow
Vickie Frye (cancer)
Ruby Gainey
Treva Gallimore
Janet & Warren Godwin
Doris Hughes
Bill Ivey
Roger Hatchel (cancer)
Frank Horton
Family of Rex Hurley
Pat Hussey
Doris Jacobs
Michael Jacobs
Klaussner Employees
Ray Lanbe
Ben Lewis (cancer)
Libby McNeil
Jeremy Moore
Renee Nelson
Tony Norris
Jackie Parks
Linda Poole (cancer)
Family of Larry Reid
Jennifer Ruff (cancer)
Gil Sides
Helen & Richard Small
Pam Thomas
Günther Tlotzek
Phyllis Tysor
Sib Vinson
Dwight & Nancy Walker
Jeff Wilder (cancer)
Dolan Williams
Jasper & JoAnn Winslow

Our World, Israel & The Ukraine
Asheboro Friends Meeting & Kids Klub
Friends Church of NC & Contentnea Quarter
Friends Disaster Service
First Responders & Healthcare Workers
All Our Elected Officials
Unspoken Requests
Unsaved Family & Friends

Please submit additions to our prayer list:
Email: asheborofriends@yahoo.com
Phone: (336) 625-3803 or (336) 689-4275

Ambwere Farm Sustainability Project Growing Canola for Oilseed and Crop Rotation

About 400 acres of the Ambwere Farm sustainability project near Kitale, Kenya has been set aside for planting canola as a cover crop through a company known as Agventure who provides seeds for planting. Planting of the canola comes right after the maize harvest and when Kenya is experiencing a change of weather patterns and most likely to have the El Nino rains.

Canola is a crop that produces tiny seeds that when cold pressed produces healthier and safer vegetable oil for human food use. Canola is one of the major oilseed crops grown in the world and the demand for canola oil stems in part from the fact it is lower in saturated fats than other vegetable oils. Canola oil is also relatively high in omega-3 and moderately high in vitamins E and K. For cooking use, it is considered to have a neutral flavor and it has a high heat tolerance.

Growing canola is also thought to have beneficial effects on soil structure. Where there is no subsoil or hardpan, the large canola taproot provides channels that improve the rate of water infiltration and may provide access for the roots of future crops into the subsoil. The extensive fine root system in the surface also improves surface soil structure, creating more stable soil aggregates than those formed under cereals, and increasing infiltration rate making the soil easier to work with. It offers rational benefits by improving the yield and quality of maize during the next maize planting season.



Canola takes three and a half months to mature so the expected time of harvest is for sometime in January. Agventure company will be providing technical advice until the maturity of the crop. Ambwere Farm is pleased to be trying a cover crop method that will protect and improve the soil for future maize as well as produce a marketable crop during the off season. Win-win.

At the Monthly Meeting held on November 12, 2023 Asheboro Friends approved supporting the Ambwere Farm Sustainability Project by investing at least \$1,000.00.

Kids Klub News

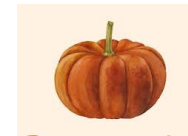
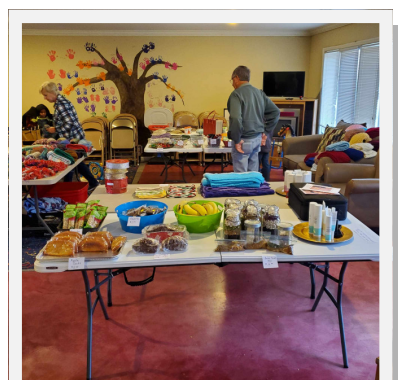
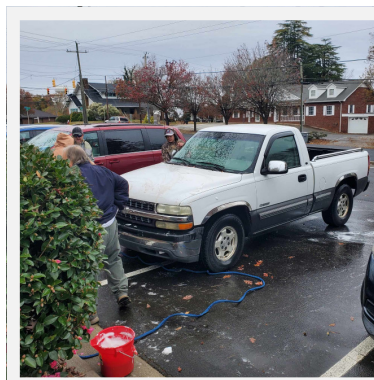
CAR WASH & BAZAAR

November 11, 2023

Proceeds support Operation Underground Railroad



Handmade craft items will be available at lunch on November 19



USFW Chicken Pie & Bake Sale Also on November 11

